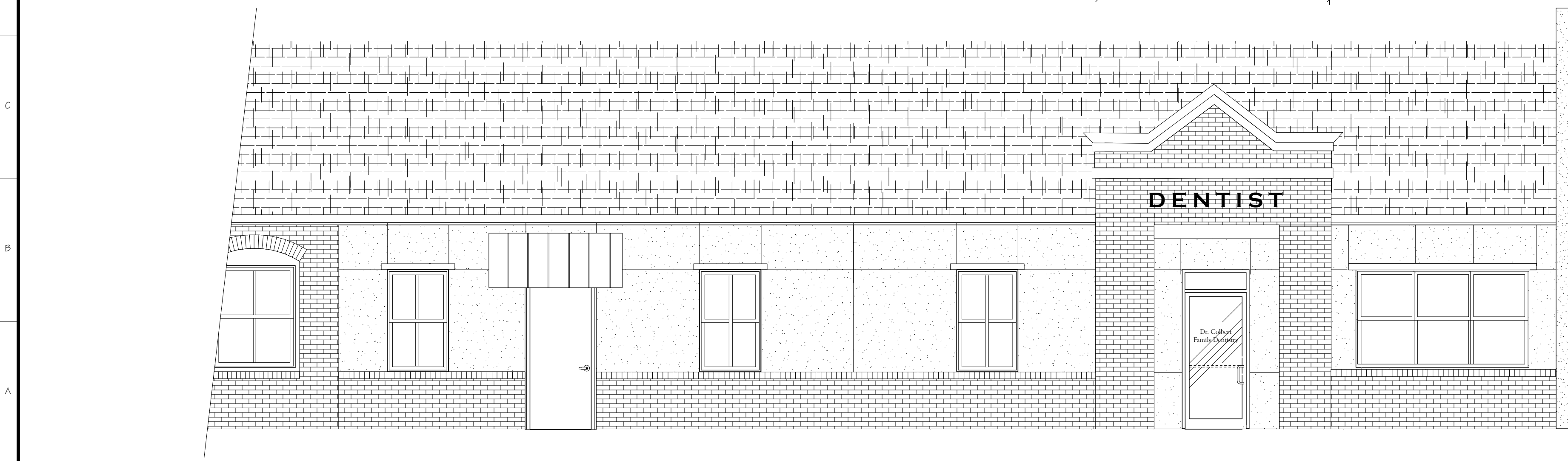


OPENING SCHEDULE

| Mark | Dimensions | Description | Frame |
|-----------------|----------------------------------|--------------------------------|-------------|
| DOORS | | | |
| 101A | 3'-0" x 7'-0" x 1 3/4" | Storefront | Hollow Mtl. |
| 101B | 3'-0" x 7'-0" x 1 3/4" | Hollow Metal | Hollow Mtl. |
| 101B | 3'-0" x 6'-8" x 1 3/4" | Flush, Plastic Laminate Veneer | Hollow Mtl. |
| 104A | 3'-0" x 6'-8" x 1 3/4" | Flush, Plastic Laminate Veneer | Hollow Mtl. |
| 104AA | PR 1'-6" x 6'-8" x 1 3/4" Bifold | Flush, Plastic Laminate Veneer | Hollow Mtl. |
| 107A | 3'-0" x 6'-8" x 1 3/4" | Flush, Plastic Laminate Veneer | Hollow Mtl. |
| 108A | 3'-0" x 6'-8" x 1 3/4" | Flush, Plastic Laminate Veneer | Hollow Mtl. |
| 109A | 3'-0" x 6'-8" x 1 3/4" | Flush, Plastic Laminate Veneer | Hollow Mtl. |
| 110A | 3'-0" x 7'-0" | Cased Opening | Hollow Mtl. |
| 112A | 3'-0" x 6'-8" x 1 3/4" | Flush, Plastic Laminate Veneer | Hollow Mtl. |
| 113A | 3'-0" x 6'-8" x 1 3/4" | Flush, Plastic Laminate Veneer | Hollow Mtl. |
| 114A | 3'-0" x 6'-8" x 1 3/4" | Flush, Plastic Laminate Veneer | Hollow Mtl. |
| 115A | 3'-0" x 7'-0" | Cased Opening | Hollow Mtl. |
| WINDOWS | | | |
| REMARKS: | | | |



Cobert Family Dental
 Broussard Commons Development
 Broussard, La

REVISIONS

| DATE | DESCRIPTION |
|------|-------------|
| | |
| | |
| | |
| | |

Project No. 20603,11
 Drawn By MT
 Checked By
 Date 6-2-07
 Scale 3/16"=1'-0"
 Drawing Title
 Drawing No. **A.100**
 Of Sheets

Date Stamp Text Block